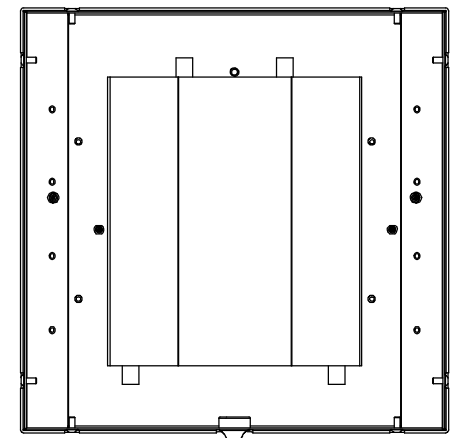
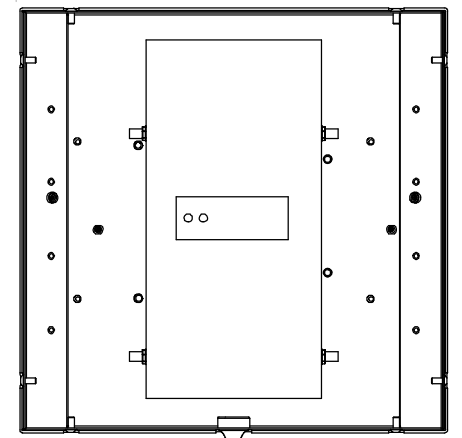


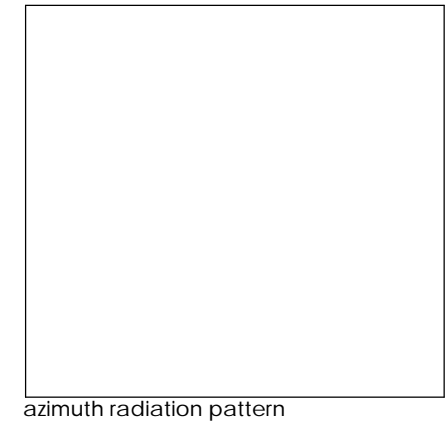
type	Outdoor case with dual antenna elements for 2.4 / 5 GHz and integrated WLAN access point.
artnr	9971020-1/2
freq	2400-2485 / 5150-5875 MHz
VSWR	< 1.5
gain	2 x 8 dBi @ 2.4 GHz / 2 x 14 dBi @ 5 GHz
polarization	vertical (optional ±45°)
az HPBW	2 x 180° @ 2.4 GHz / 2 x 90° @ 5 GHz
el HPBW	30° @ 2.4 GHz / 15° @ 5 GHz
connectors	4 x MCX chassi female
radome	light gray ABS RAL 7035
weight	0 g
mount	wall, indoor / outdoor
usage	The design idea is to mount the access point directly adjacent to the antenna and to use very short antenna cables. This gives very low loss and superior system performance. The antenna has mounting holes for, and has been tested with, Cisco 1242AG, HP RadioPort 220, Proxim AP700/AP4000 and Linux platforms. Power access point using Power over ethernet IEEE 802.3af. This product is designed to be mounted on a wall for typically 180 deg sector coverage. The product is very suitable for mesh networks.



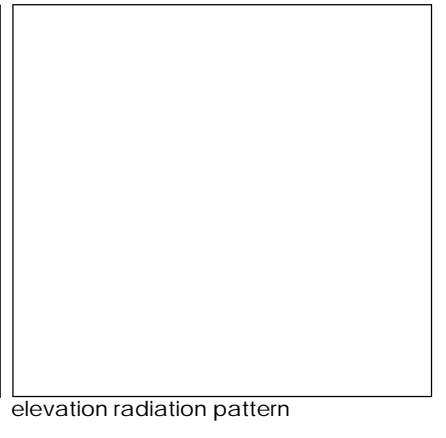
Artnr 9971020-1, for Cisco 124AG, cables MCX male angle - RP-TNC male angle, RG316, length 120 mm (4 pcs)



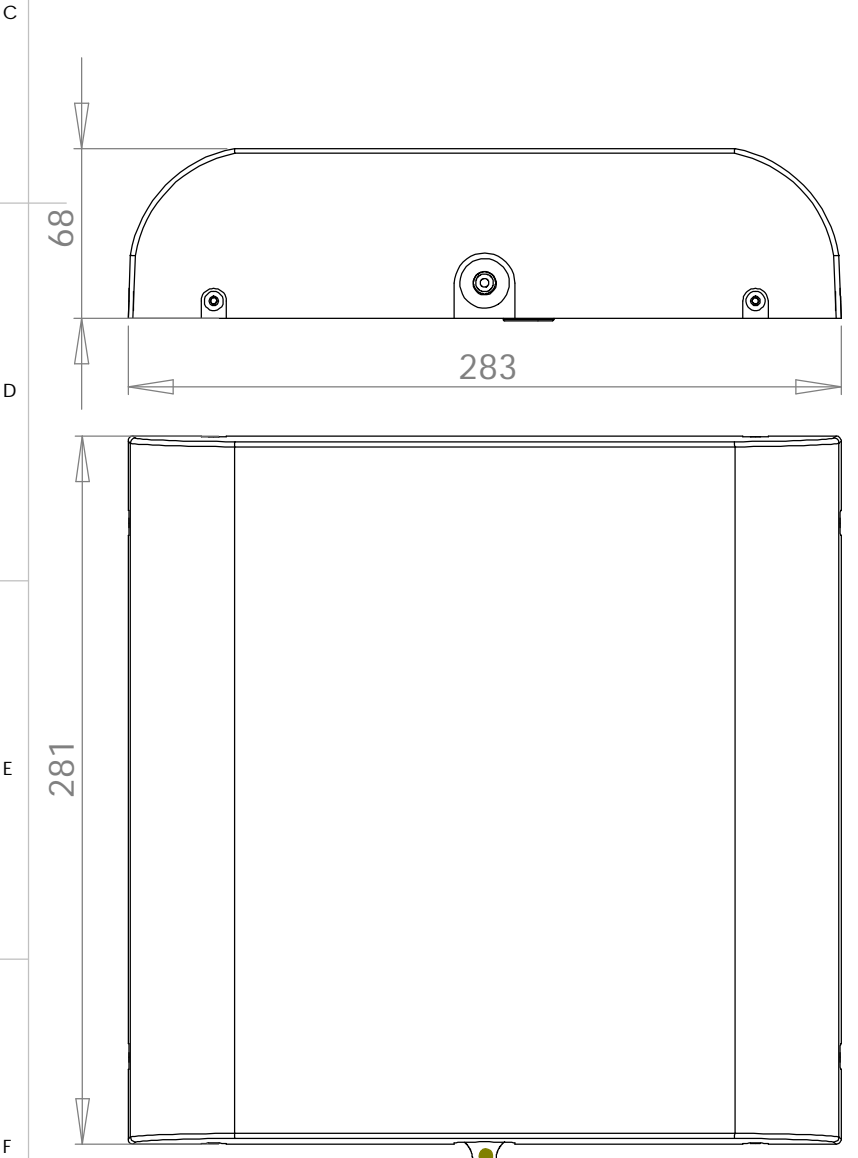
Artnr 9971020-2, for HP Radio Port 220, cables MCX male angle - RP-SMA male, RG316, length 120 mm (4 pcs)



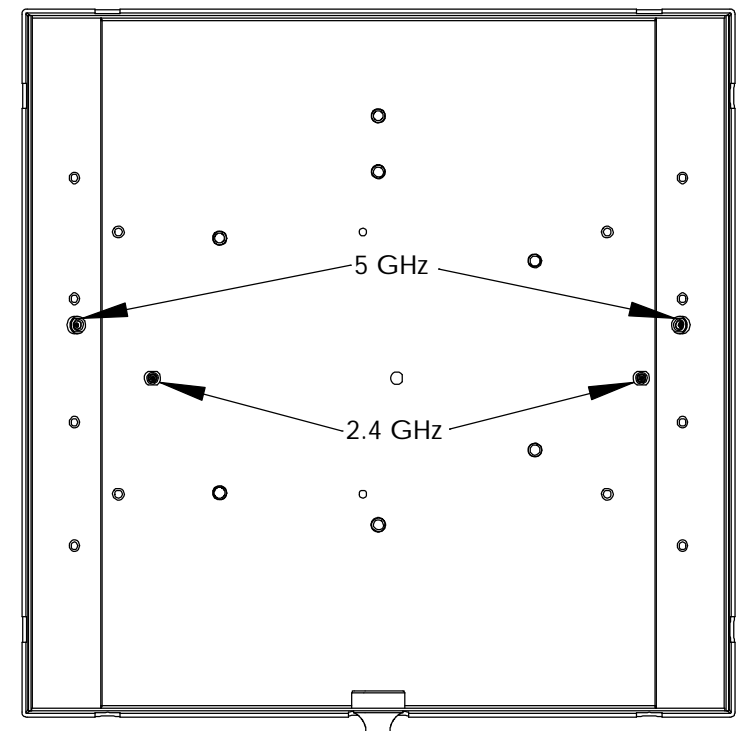
azimuth radiation pattern



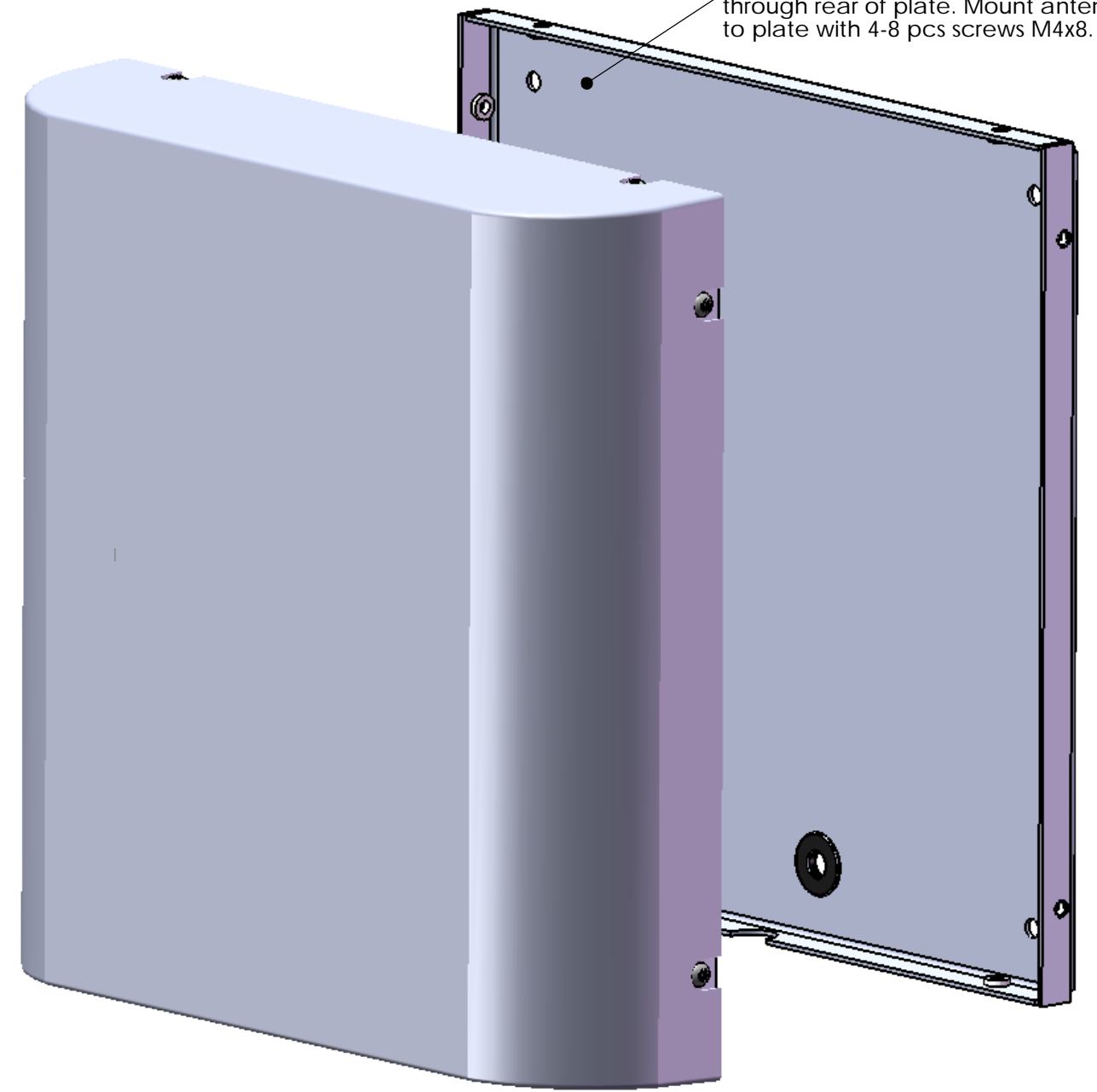
elevation radiation pattern



EPDM rubber feedthrough for eg ethernet cable diameter 5-9 mm.



Rear view without mounting plate. MCX female connectors for antennas.



Mount plate on wall, route ethernet cable through bottom of antenna or through rear of plate. Mount antenna to plate with 4-8 pcs screws M4x8.

Konstruerad av NG	Granskad av	Datum 2008-11-16	Ritningsnummer 9971020-0-1	Generell tolerans	Generell yt-jämnhet, Ra	Vyplacering	Skala
Agare			Titel/Benämning Dual Band Mesh Antenna		Material radome ABS, reflector alu	Utgåva 1	Blad
RADIOLAGET							